



Mask Maker Recipe & precaution



Smart Nature Skincare

FRUIT MASK OVER 100 TYPES OF RECIPES



=



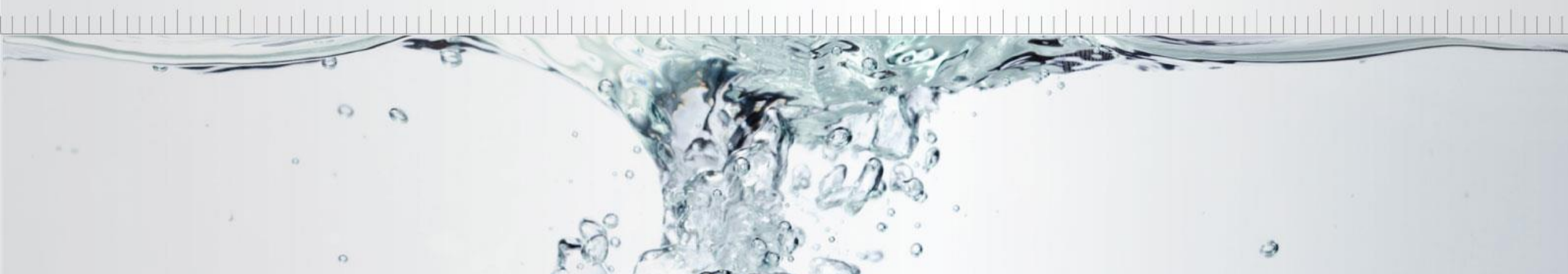
+



+



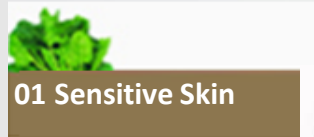
Please note that mask can be made with TheraPhor machine (mask machine)



8 Type Skin Trouble Solution

EFFECT per each mask recipe

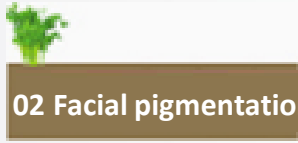
FRUIT MASK OVER 100 TYPES OF RECIPES



01 Sensitive Skin

Spinach

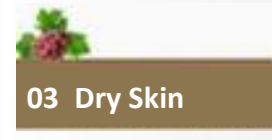
Whitening , Anti-aging with Various Nutriment



02 Facial pigmentation

water parsley

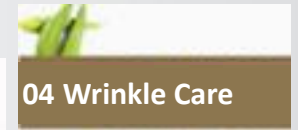
Deep Cleansing, Fast Moisture, Improvement of Facial Pigmentation and Spot with Various Nutriment



03 Dry Skin

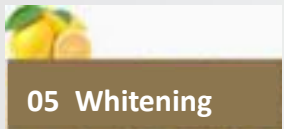
Gratefruit

Skin Moisture, Anti-aging with poluphenol



04 Wrinkle Care

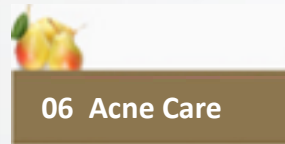
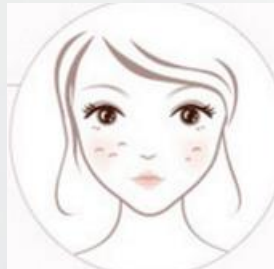
Vegetable Sponge
Wrinkle Care with Vitamin Ingredient



05 Whitening

Lemon

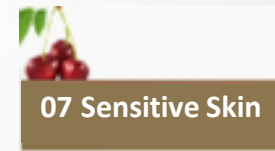
Whitening with Vitamin C



06 Acne Care

Pear

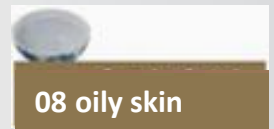
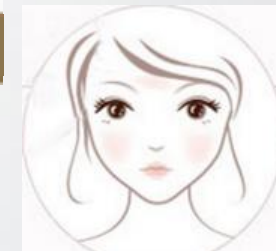
Acne Care with supplement of Moisturizing with Vitamin C



07 Sensitive Skin

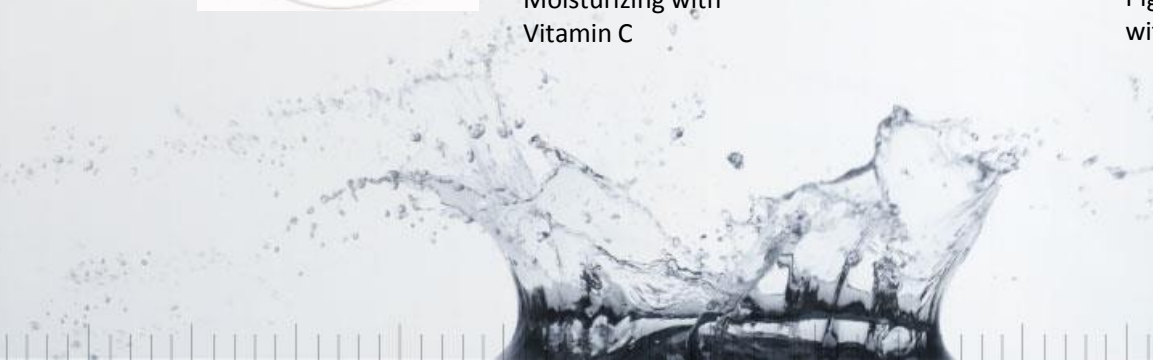
Cherry

Whitening and Preventing Melanin Pigment Generation with Vitamin C



08 oily skin

Washed Rice Water
Pore Cleaning

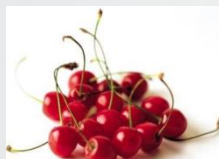




Whitening



Yogurt
(Activated Cell)



Cherry
(Bright Skin)



Milk
(Whitening)



Honey
(Bright Skin)

Acne



Tomato
(Bright Skin,
Oil Control)



Kiwi
(Whitening)



Balsam Apple
(Acne Care)



Yacon
(Skincare)



Pearl
(Moisturizing)



Watermelon
(Moisturizing)



Cucumber
(Moisturizing)



Apple
(Elastic Skin)



Carrot
(Wrinkle Care)



Orange
(Dead Skin Cell Care)



Dragon Fruit
(Soothing Skin)



Strawberry
(Bright Skin)

Moisturizing

Wrinkle Improvement





Precaution for use of Mask Machine

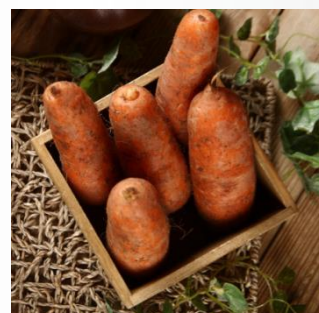
- The main ingredients for gel mask are **Beauty Gel** and water. Various recipes are available. According to your skin type you can mix with other extra ingredient, such as toner, serum, fruits and vegetables.
- Please note that when cleaning separate the internal parts after daily usage.
- Please remove the water inside by upsiding and down the machine when cleaning.
- Please do not put water inside to the electric part of the machine directly, as it is electric machine.
- When cleaning the blender part, please use with toothbrush, etc., well so that no particles are left.
- Please assemble the parts after fully drying every parts which well cleaned and dried.
- Please use after electric connection part is well dried.
- Please assemble every parts perfectly until it clicks into machine(please push the parts well when assembling).



Selection of ingredient

- **Unavailable ingredient** : ingredient with a few moisture, such as banana, carrot, too much oil contained ingredient and ingredient with high viscosity(like honey).

As mask is made by extracting fruit and vegetable juice, it is unavailable with no juicy fruit and vegetable , such as banana and carrot. Also, it is available with ingredient with high level of oil ingredient. Please note make liquid status with dissolving into water for high indensity, such as honey.



- When you put essence, it should put 20ml, beeps and working well. In case of expensive essence, we recommend that putting little bit and pouring the other toner to reach 20ml.





Thank you

*Beauty
Station*

